

SHENZHEN CENTURY TIANCHUANG TECHNOLOGY CO.,LTD.
LINTONG COLLEGE ROAD NO. 1, 771 IC PACKAGING FACTORY IN CHINA'S SPACE

The following sample(s) was/were submitted and identified on behalf of the applicant as SSOP16
Client Reference: SC1923A

SGS Ref No. : GZ10820932EC-18.8
Sample Receiving Date : JAN 21, 2012
Testing Period : JAN 21, 2012 TO JAN 24, 2012

Test Requested : A: In accordance with the RoHS Directive 2002/95/EC, and its amendment directives.
B: To determine the Hexavalent Chromium content in the submitted sample.

Test Method : A: With reference to IEC 62321/2nd CDV (111/95/CDV)
Procedures for the Determination of Levels of Regulated Substances in Electrotechnical Products
(1) Determination of Cadmium by ICP-OES.
(2) Determination of Lead by ICP-OES.
(3) Determination of Mercury by ICP-OES.
(4) Determination of Hexavalent Chromium by Colorimetric Method.
(5) Determination of PBBs and PBDEs by GC-MS.
B: As specified by client, with reference to JIS H8625-1993.
(6) Determination of Hexavalent Chromium by UV-Vis Spectrometry.

Test Results : Please refer to next page.

Conclusion : A: Based on the performed tests on submitted sample(s), the results **comply with** the RoHS Directive 2002/95/EC and its subsequent amendments.

Signed for and on behalf of
SGS-CSTC Ltd.

Signed for and on behalf of
SGS-CSTC Ltd.



Huang Fang, Sunny
Sr. Engineer

He Xiaoyan, Jane
Technical Manager

Test results by chemical method (Unit: mg/kg)

A:

Test Item(s):	Method (refer to)	No.1	No.2	MDL	RoHS Limit
Cadmium(Cd)	(1)	N.D.	N.D.	2	100
Lead (Pb)	(2)	6	19	2	1000
Mercury (Hg)	(3)	N.D.	N.D.	2	1000
Hexavalent Chromium (CrVI) by alkaline extraction	(4)	N.D.	---	2	1000
Hexavalent Chromium (CrVI) by boiling water extraction	(4)	---	Negative	See Note 5	#
Sum of PBBs		N.D.	---	-	1000
Monobromobiphenyl		N.D.	---	5	
Dibromobiphenyl		N.D.	---	5	
Tribromobiphenyl		N.D.	---	5	
Tetrabromobiphenyl		N.D.	---	5	
Pentabromobiphenyl		N.D.	---	5	
Hexabromobiphenyl		N.D.	---	5	
Heptabromobiphenyl		N.D.	---	5	
Octabromobiphenyl		N.D.	---	5	
Nonabromobiphenyl		N.D.	---	5	
Decabromobiphenyl		N.D.	---	5	
Sum of PBDEs (Mono to Nona)(Note 4)	(5)	N.D.	---	-	1000
Monobromodiphenyl ether		N.D.	---	5	
Dibromodiphenyl ether		N.D.	---	5	
Tribromodiphenyl ether		N.D.	---	5	
Tetrabromodiphenyl ether		N.D.	---	5	
Pentabromodiphenyl ether		N.D.	---	5	
Hexabromodiphenyl ether		N.D.	---	5	
Heptabromodiphenyl ether		N.D.	---	5	
Octabromodiphenyl ether		N.D.	---	5	
Nonabromodiphenyl ether		N.D.	---	5	
Decabromodiphenyl ether		N.D.	---	5	
Sum of PBDEs (Mono to Deca)		N.D.	---	-	-

- Note :
1. mg/kg = ppm
 2. N.D. = Not Detected (< MDL)
 3. MDL = Method Detection Limit
 4. Sum of Mono to NonaBDE & according to 2005/717/EC DecaBDE is exempt.
 5. **Spot-test:**
 Negative = Absence of CrVI coating, Positive = Presence of CrVI coating;
 (The tested sample should be further verified by boiling-water-extraction method if the spot test result is negative or cannot be confirmed.)
Boiling-water-extraction:
 Negative = Absence of CrVI coating
 Positive = Presence of CrVI coating; the detected concentration in boiling-water-extraction solution is equal or greater than 0.02 mg/kg with 50 cm² sample surface area.
 6. # = Positive indicates the presence of CrVI on the tested areas.
 Negative indicates the absence of CrVI on the tested areas.
 7. “-“ = Not regulated
 8. “---“ = Not Conducted

B:

Test Item(s):	Method (refer to)	No.2	MDL
Hexavalent Chromium (CrVI) by boiling water extraction	(6)	N.D.	0.02µg/cm ²

- Note :
1. N.D. = Not Detected (< MDL)
 2. MDL = Method Detection Limit

Test Part Description:

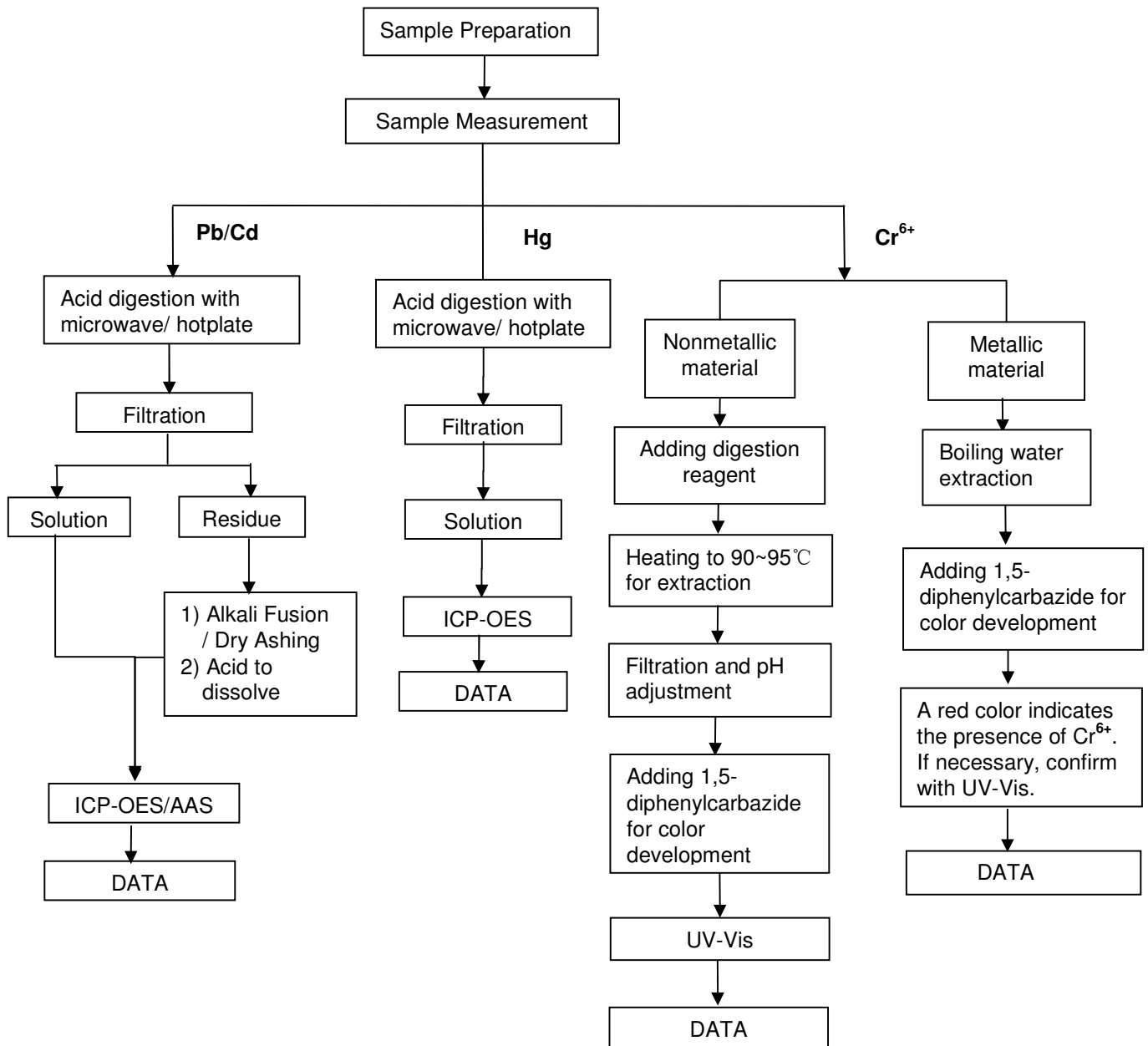
- No.1 Black body w/ brown printing (mixed)
 No.2 Silvery metal pin

Remark : As requested by client, the testing of No.1 was conducted as whole / part sample, for the sample can't be disjointed.

ATTACHMENTS

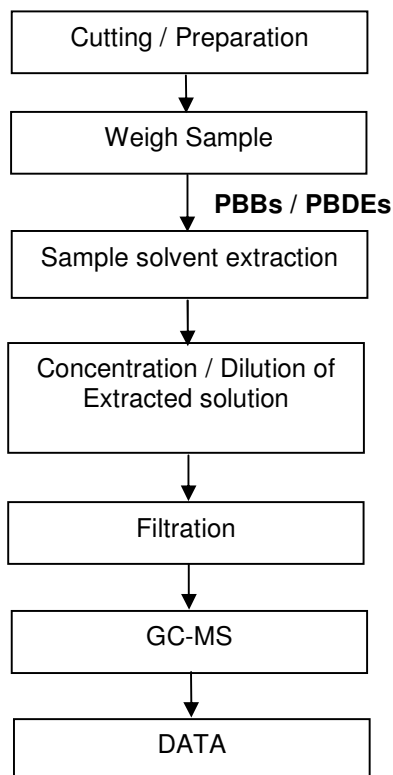
Testing Flow Chart

- 1) Name of the person who made measurement: David Shen
- 2) Name of the person in charge of measurement: Emily Feng

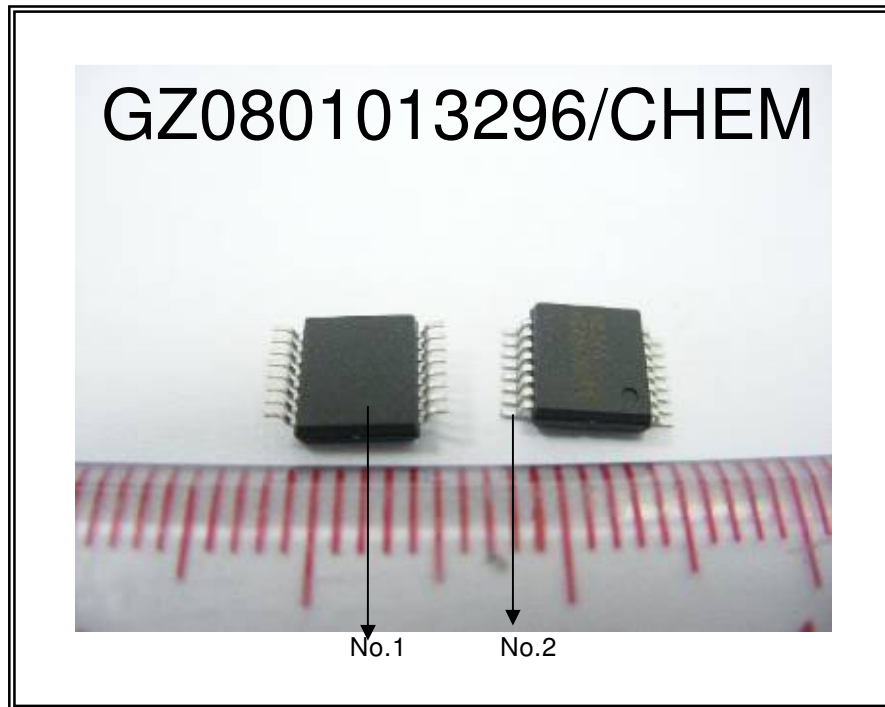


Testing Flow Chart

- 1) Name of the person who made measurement: Fiona Xu
- 2) Name of the person in charge of measurement: Nina Wu



Sample photo :



SGS authenticate the photo on original report only

*** End of Report ***