



## Test Report

No.: GZ0904029054/CHEM

Date: APR 13, 2012

Page 1 of 6

SHENZHEN CENTURY TIANCHUANG TECHNOLOGY CO.,LTD.  
LINTONG COLLEGE ROAD NO. 1, 771 IC PACKAGING FACTORY IN CHINA'S SPACE

The following sample(s) was/were submitted and identified on behalf of the applicant as SDIP24

SGS Job No. : GZ11737184EC

SGS Internal Reference No. : 15.4

Date of Sample Received : APR 09, 2012

Testing Period : APR 09, 2012 TO APR 13, 2012

Test Requested : Selected test (s) as requested by client.

Test Method : Please refer to next page(s).

Test Result(s) : Please refer to next page(s).

Conclusion : Based on the performed tests on submitted sample(s), the results **comply with** the RoHS Directive 2002/95/EC and its subsequent amendments.

Signed for and on behalf of  
SGS-CSTC Ltd.

Signed for and on behalf of  
SGS-CSTC Ltd.

Huang Fang, Sunny  
Sr. Engineer

He Xiaoyan, Jane  
Tech. Manager

This document is issued by the Company under its General Conditions of Service printed overleaf or available on request and accessible at [http://www.sgs.com/terms\\_and\\_conditions.htm](http://www.sgs.com/terms_and_conditions.htm). Attention is drawn to the limitation of liability, indemnification and jurisdiction issues defined therein. Any holder of this document is advised that information contained hereon reflects the Company's findings at the time of its intervention only and within the limits of Client's instructions, if any. The Company's sole responsibility is to its Client and this document does not generate parties to a transaction from exercising all their rights and obligations under the transaction documents. Any unauthorized alteration, forgery or falsification of the content or appearance of this document is unlawful and offenders may be prosecuted to the fullest extent of the law.  
Unless otherwise stated, the results shown in this test report refer only to the sample(s) tested. This document cannot be reproduced except in full, without prior approval of the Company.



SGS - Standards Technical Services Co., Ltd.  
Guangzhou RoHS Testing Service Laboratory

138 Kazhu Road, Sientech Park, Guangzhou Economic & Technology Development District, Guangzhou, China 510863 | (86-20) 82155555 | (86-20) 82075125 | www.cn.sgs.com  
中国·广州·经济技术开发区科学城科珠路198号 邮编: 510863 | (86-20) 82155555 | (86-20) 82075125 | sgs.china@sgs.com

Member of the SGS Group (SGS SA)

**Test Results:**

Description for specimen 1 : Black body w/ silvery printing (mixed)

**RoHS Directive 2002/95/EC**

Test Item(s)	Unit	Test Method (Reference)	Result	MDL	Limit
Cadmium (Cd)	mg/kg	IEC 62321: 2008, ICP-OES	N.D.	2	100
Lead (Pb)	mg/kg	IEC 62321: 2008, ICP-OES	N.D.	2	1000
Mercury (Hg)	mg/kg	IEC 62321: 2008, ICP-OES	N.D.	2	1000
Hexavalent Chromium (CrVI) by alkaline extraction	mg/kg	IEC 62321: 2008, UV-Vis	N.D.	2	1000
Sum of PBBs	mg/kg	-	N.D.	-	1000
Monobromobiphenyl	mg/kg	IEC 62321: 2008, GC-MS	N.D.	5	
Dibromobiphenyl	mg/kg	IEC 62321: 2008, GC-MS	N.D.	5	
Tribromobiphenyl	mg/kg	IEC 62321: 2008, GC-MS	N.D.	5	
Tetrabromobiphenyl	mg/kg	IEC 62321: 2008, GC-MS	N.D.	5	
Pentabromobiphenyl	mg/kg	IEC 62321: 2008, GC-MS	N.D.	5	
Hexabromobiphenyl	mg/kg	IEC 62321: 2008, GC-MS	N.D.	5	
Heptabromobiphenyl	mg/kg	IEC 62321: 2008, GC-MS	N.D.	5	
Octabromobiphenyl	mg/kg	IEC 62321: 2008, GC-MS	N.D.	5	
Nonabromobiphenyl	mg/kg	IEC 62321: 2008, GC-MS	N.D.	5	
Decabromobiphenyl	mg/kg	IEC 62321: 2008, GC-MS	N.D.	5	
Sum of PBDEs	mg/kg	-	N.D.	-	1000
Monobromodiphenyl ether	mg/kg	IEC 62321: 2008, GC-MS	N.D.	5	
Dibromodiphenyl ether	mg/kg	IEC 62321: 2008, GC-MS	N.D.	5	
Tribromodiphenyl ether	mg/kg	IEC 62321: 2008, GC-MS	N.D.	5	
Tetrabromodiphenyl ether	mg/kg	IEC 62321: 2008, GC-MS	N.D.	5	
Pentabromodiphenyl ether	mg/kg	IEC 62321: 2008, GC-MS	N.D.	5	
Hexabromodiphenyl ether	mg/kg	IEC 62321: 2008, GC-MS	N.D.	5	
Heptabromodiphenyl ether	mg/kg	IEC 62321: 2008, GC-MS	N.D.	5	
Octabromodiphenyl ether	mg/kg	IEC 62321: 2008, GC-MS	N.D.	5	
Nonabromodiphenyl ether	mg/kg	IEC 62321: 2008, GC-MS	N.D.	5	
Decabromodiphenyl ether ##	mg/kg	IEC 62321: 2008, GC-MS	N.D.	5	

**Note:**

1. mg/kg = ppm
2. N.D. = Not Detected (< MDL)
3. MDL = Method Detection Limit
4. ## = The exemption of DecaBDE in polymeric application according 2005/717/EC was overruled by the European Court of Justice by its decision of 01.04.2008. Subsequently DecaBDE is included in the sum of PBDE after 01.07.2008
5. "-" = Not regulated

This document is issued by the Company under its General Conditions of Service printed overleaf or available on request and accessible at [http://www.sgs.com/terms\\_and\\_conditions.htm](http://www.sgs.com/terms_and_conditions.htm). Attention is drawn to the limitation of liability, indemnification and jurisdiction issues defined therein. Any holder of this document is advised that information contained hereon reflects the Company's findings at the time of its intervention only and within the limits of Client's instructions, if any. The Company's sole responsibility is to its Client and this document does not generate parties to a transaction from exercising all their rights and obligations under the transaction documents. Any unauthorized alteration, forgery or falsification of the content or appearance of this document is unlawful and offenders may be prosecuted to the fullest extent of the law. Unless otherwise stated, the results shown in this test report refer only to the sample(s) tested. This document cannot be reproduced except in full, without prior approval of the Company.



Description for specimen 2 : Silvery metal pin

**RoHS Directive 2002/95/EC**

Test Item(s)	Unit	Test Method (Reference)	Result	MDL	Limit
Cadmium (Cd)	mg/kg	IEC 62321 : 2008, ICP-OES	N.D.	2	100
Lead (Pb)	mg/kg	IEC 62321 : 2008, ICP-OES	N.D.	2	1000
Mercury (Hg)	mg/kg	IEC 62321 : 2008, ICP-OES	N.D.	2	1000
Hexavalent Chromium (CrVI) by boiling water extraction	-	IEC 62321 : 2008, UV-Vis	Negative	◇	#

**Note:**

1. mg/kg = ppm
2. N.D. = Not Detected (< MDL)
3. MDL = Method Detection Limit
4. ◇ = Spot test:  
 Negative = Absence of CrVI coating, Positive = Presence of CrVI coating;  
 (The tested sample should be further verified by boiling water extraction method if the spot test result is negative or cannot be confirmed.)  
 Boiling water extraction:  
 Negative = Absence of CrVI coating  
 Positive = Presence of CrVI coating; the detected concentration in boiling water extraction solution is equal or greater than 0.02 mg/kg with 50 cm<sup>2</sup> sample surface area.  
 Storage conditions and production date of the tested sample are unavailable and thus results of Cr(VI) represent status of the sample at the time of testing.
5. # = Positive indicates the presence of CrVI on the tested area.  
 Negative indicates the absence of CrVI on the tested area.
6. "-" = Not regulated

Remark : As requested by client, the test of specimen 1 was conducted as whole / part sample, for the sample can't be disjointed.

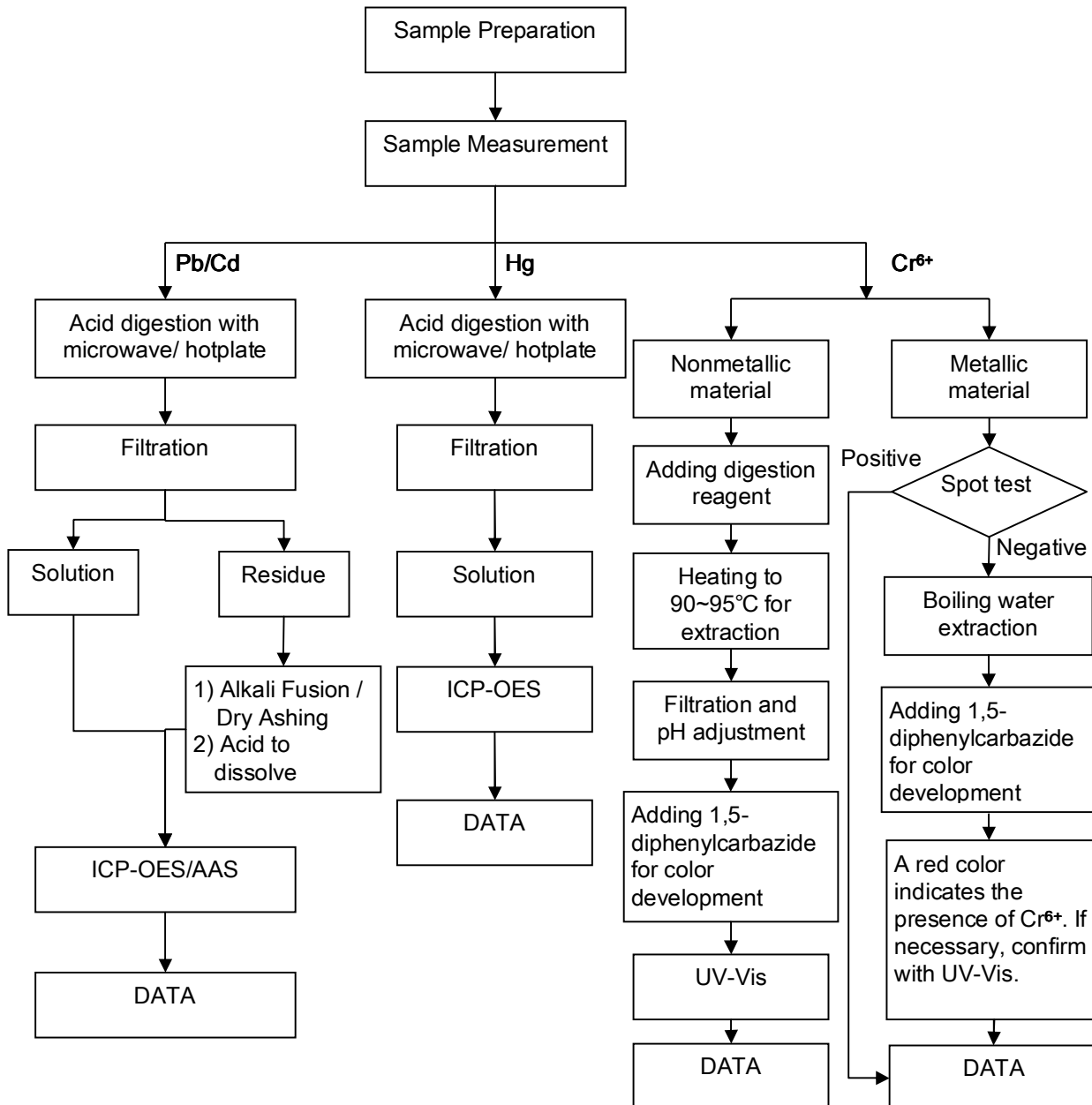
This document is issued by the Company under its General Conditions of Service printed overleaf or available on request and accessible at [http://www.sgs.com/terms\\_and\\_conditions.htm](http://www.sgs.com/terms_and_conditions.htm). Attention is drawn to the limitation of liability, indemnification and jurisdiction issues defined therein. Any holder of this document is advised that information contained hereon reflects the Company's findings at the time of its intervention only and within the limits of Client's instructions, if any. The Company's sole responsibility is to its Client and this document does not generate parties to a transaction from exercising all their rights and obligations under the transaction documents. Any unauthorized alteration, forgery or falsification of the content or appearance of this document is unlawful and offenders may be prosecuted to the fullest extent of the law.  
 Unless otherwise stated, the results shown in this test report refer only to the sample(s) tested. This document cannot be reproduced except in full, without prior approval of the Company.



### ATTACHMENTS

#### Testing Flow Chart

- 1) Name of the person who made measurement: Luke Xu / Lily Lee
- 2) Name of the person in charge of measurement: Adams Yu / Leo Wang
- 3) These samples were dissolved totally by pre-conditioning method according to below flow chart (Cr<sup>6+</sup> test method excluded).

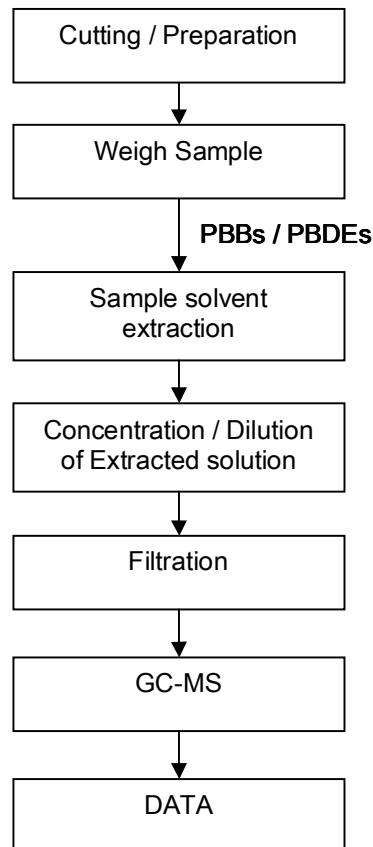


This document is issued by the Company under its General Conditions of Service printed overleaf or available on request and accessible at [http://www.sgs.com/terms\\_and\\_conditions.htm](http://www.sgs.com/terms_and_conditions.htm). Attention is drawn to the limitation of liability, indemnification and jurisdiction issues defined therein. Any holder of this document is advised that information contained hereon reflects the Company's findings at the time of its intervention only and within the limits of Client's instructions, if any. The Company's sole responsibility is to its Client and this document does not generate parties to a transaction from exercising all their rights and obligations under the transaction documents. Any unauthorized alteration, forgery or falsification of the content or appearance of this document is unlawful and offenders may be prosecuted to the fullest extent of the law. Unless otherwise stated, the results shown in this test report refer only to the sample(s) tested. This document cannot be reproduced except in full, without prior approval of the Company.



### Testing Flow Chart

- 1) Name of the person who made measurement: Lina Tang
- 2) Name of the person in charge of measurement: Tina Zhao

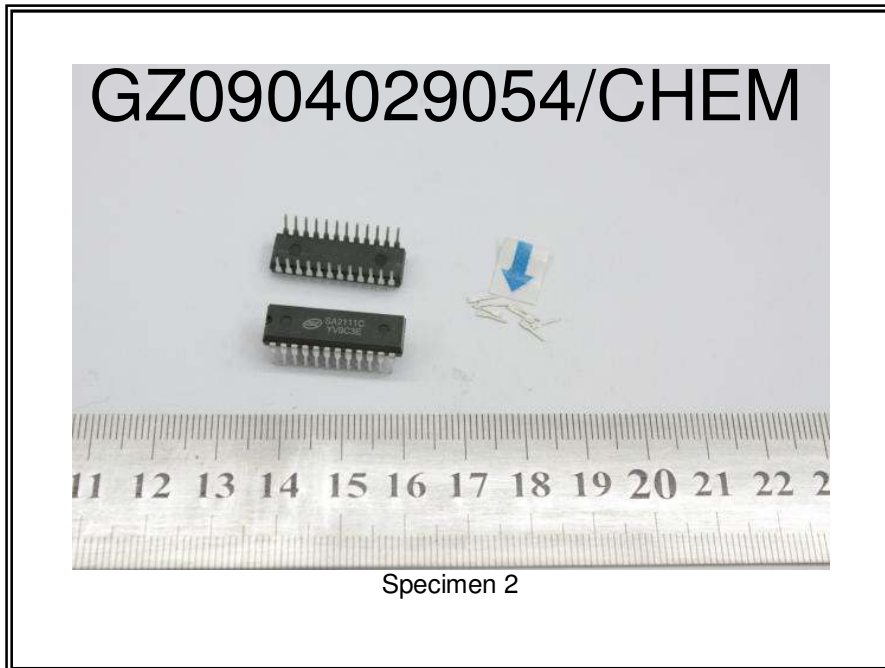
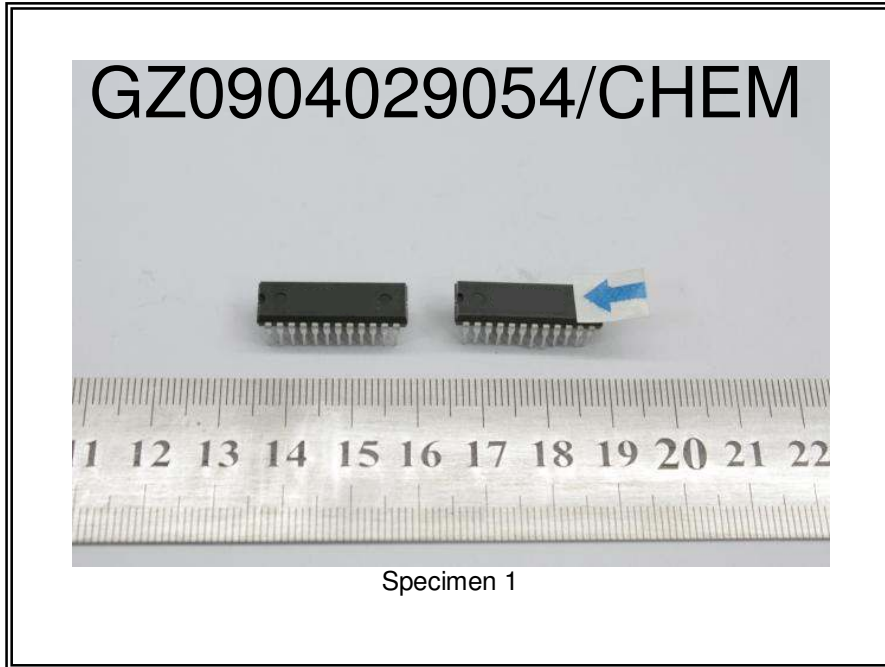


This document is issued by the Company under its General Conditions of Service printed overleaf or available on request and accessible at [http://www.sgs.com/terms\\_and\\_conditions.htm](http://www.sgs.com/terms_and_conditions.htm). Attention is drawn to the limitation of liability, indemnification and jurisdiction issues defined therein. Any holder of this document is advised that information contained hereon reflects the Company's findings at the time of its intervention only and within the limits of Client's instructions, if any. The Company's sole responsibility is to its Client and this document does not generate parties to a transaction from exercising all their rights and obligations under the transaction documents. Any unauthorized alteration, forgery or falsification of the content or appearance of this document is unlawful and offenders may be prosecuted to the fullest extent of the law.

Unless otherwise stated, the results shown in this test report refer only to the sample(s) tested. This document cannot be reproduced except in full, without prior approval of the Company.



Sample photo :



SGS authenticate the photo on original report only

\*\*\* End of Report \*\*\*

This document is issued by the Company under its General Conditions of Service printed overleaf or available on request and accessible at [http://www.sgs.com/terms\\_and\\_conditions.htm](http://www.sgs.com/terms_and_conditions.htm). Attention is drawn to the limitation of liability, indemnification and jurisdiction issues defined therein. Any holder of this document is advised that information contained hereon reflects the Company's findings at the time of its intervention only and within the limits of Client's instructions, if any. The Company's sole responsibility is to its Client and this document does not generate parties to a transaction from exercising all their rights and obligations under the transaction documents. Any unauthorized alteration, forgery or falsification of the content or appearance of this document is unlawful and offenders may be prosecuted to the fullest extent of the law.

Unless otherwise stated, the results shown in this test report refer only to the sample(s) tested. This document cannot be reproduced except in full, without prior approval of the Company.

